

# Saint Mary's by the Sea



321 10th St, Huntington Beach, CA 92648

Phone: (714) 536-6913

[www.stmarysbythesea.net](http://www.stmarysbythesea.net)

## Legacy Project



# Words from the Pastor

Dear Friends in Christ,

Saint Mary's by the Sea has a long history. In 1905 it was a Mission Church of Saint Joseph Parish in Santa Ana. Then in 1912, the Mission became Saint Mary's Parish in the Diocese of Monterey-Los Angeles. When the Diocese of Orange was established in 1976, the parish officially became Saint Mary's by the Sea Catholic Church.



With the effort and cooperation of members of our parish family, we have achieved much. Today, we are a vibrant parish that is still growing.

As we look forward to the enrichment of the spiritual life of our parishioners and the beautification of the Sanctuary, several modifications are necessary :

1. Bishop Kevin Vann blessed our new organ during his first pastoral visit in 2013. Our Bishop was impressed with our Church and he said to me: "You can move the Tabernacle to the center, but take time." I have thought and prayed about moving the Tabernacle to the center of the Altar while maintaining reverence for the sacred space and the Liturgical Norm.
2. The sanctuary is a Holy space for worshipping our Lord. We currently do not have ADA accessibility for our parishioners and guests who come to our Church; we use a portable ramp for which requires them to cross the Sanctuary to access the pews.
3. The current furniture: the Ambo, chairs, etc. do not match and are very old and worn down. For the safety and unity of our worship space, we need to replace them all.
4. According to the Liturgical Norm, the Altar must be structurally sound. We now have to push the Altar back and forth to accommodate the Masses and the flooring is starting to give way.
5. We need to inspect and possibly replace the utilities under the Church to ensure the safety of our parishioners.
6. The Church, Rectory, Parish offices and Hall all need roof repair.



In order to respond to all of these needs we will need to have about \$900,000. The wonderful news is that through years of savings and the generosity of our Parishioners, we have about \$450,000 already in our building fund.

Our need is clear and significant: our goal is to raise the total amount necessary for construction and modification of the Sanctuary, Flooring and Roof repair through our Legacy Campaign. The Parish Committee and I promise to proceed with proper planning, accountability, and good communication, but most of all we need your help and prayers to accomplish our ambitious goal.

This parish community has a generous heart and a willing hand. Please lend us your heart and hand in support of our efforts to ensure St. Mary by the Sea's Legacy.

With prayer and gratitude,

*Rev. Quang Vinh Chu*

Rev. Quang Vinh Chu  
Pastor



# Saint Mary's by the Sea



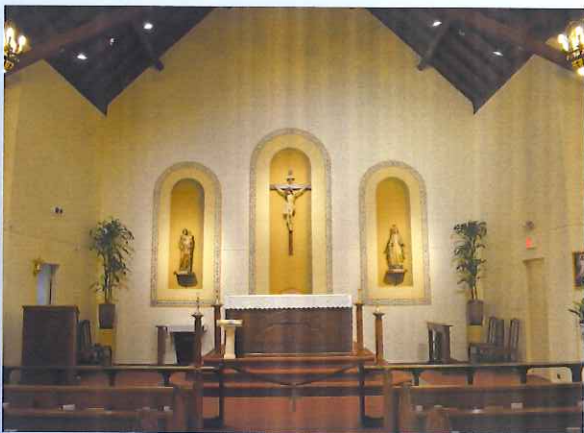
# St Mary's by the Sea: Through the Years



Sanctuary in 1925



In 1959



1977 - Today



Our Future  
Our Legacy

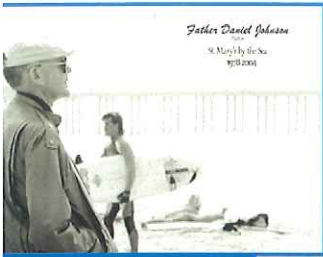
## Legacy Project



# Project Plans

## Church, Hall, Rectory and Office:

- ❖ Replacement of roofing with Duration Series Shingles
- ❖ Rigid Insulation for Climate Control



## New Communion Rail and Addition of Cushions

## Sanctuary Flooring

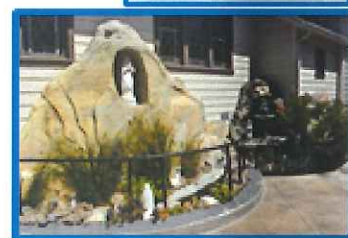
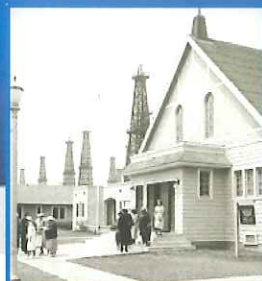
- ❖ Carpet replacement with marble flooring
- ❖ Pipe replacement and reinforcement under altar



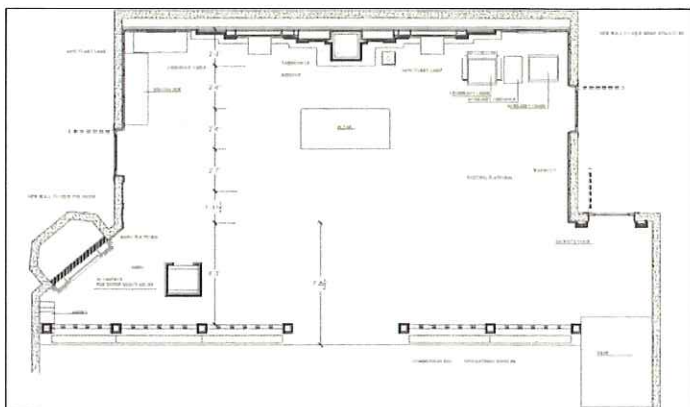
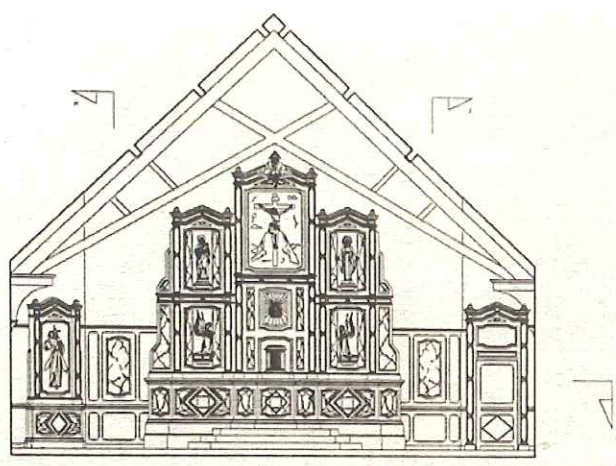
## ADA Compliance Restroom





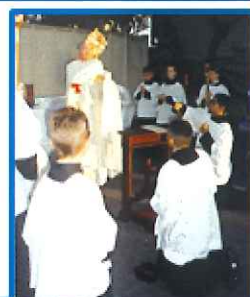


S



## ADA Accessible

- ❖ Handicap entrance right-side of Sanctuary with direct access to pews



## Sanctuary Rebuild

- ❖ Reposition Tabernacle behind altar
- ❖ Retablo Replacement
- ❖ New Altar, Ambo and Sanctuary Lamp
- ❖ Upgrade to Sanctuary Lighting
- ❖ Complete Replacement of Furniture as per Liturgical Norm:

Presider and Concelebrant chairs

Altar Server bench





# Suggested Gift Plans

Success will be ours if every family will set aside, over the next thirty-six months, at least \$1.40 a day or \$42 a month. If you are not able to do this, your pledge in any amount is encouraged and will be gratefully received.

THREE YEAR GIFT TABLE					
Gift Level	Total Pledge	36 Monthly Payments	12 Quarterly Payments	6 Semi-Annual Payments	3 Annual Payments
Legacy	\$50,000	\$1,389	\$4,167	\$8,333	\$16,667
Heritage	\$25,000	\$694	\$2,083	\$4,167	\$8,333
Benefactor	\$10,000	\$278	\$833	\$1,667	\$3,333
Leadership	\$7,500	\$208	\$625	\$1,250	\$2,500
Cornerstone	\$5,000	\$139	\$417	\$833	\$1,667
Builder	\$2,500	\$69	\$208	\$417	\$833
Founder*	\$1,500	\$42	\$125	\$250	\$500
*Just \$1.40 a day					

We ask you to keep in mind that it will take gifts at these levels over 36 months to reach our goal. Pledges enable you to consider a more significant contribution to the campaign rather than a one-time gift.

**Automatic Debit** from checking/savings accounts or credit cards are available. Please visit [www.stmarysbythesea.net](http://www.stmarysbythesea.net) click on the Donate Now button and select Legacy Project. Please contact the Parish Office for more information at (714) 536-6913.

## Tax Deductible Gifts

All gifts are tax deductible as provided by law. Receipts will be provided upon request.

## Pledge Payments

You will receive reminder notices in accordance with the payment method you select. Please make your checks payable to: St Mary's By the Sea Legacy Project

## Stocks and Bonds

There are added advantages to giving stocks, bonds, and securities. You not only take credit for a charitable gift at its present value but, if held for more than a year, you are also exempt from paying tax on the profit realized from the original investment. Talk with your financial advisor for more information on making these types of charitable donations.

## IRA Gifts

If you are over 70 1/2 years old, you may also be eligible to make a charitable gift from your IRA assets. These types of gifts must be transferred directly and count toward your minimum required distribution. Again it is always a good idea to speak with your financial advisor for more information.

## Wills and Bequests

Providing for St. Mary's by the Sea Church in your will can have significant federal and estate tax advantages. For additional information, please contact the Parish Office at (714) 536-6913.

## Matching Gift Programs

Please ask the Human Resources Department at your place of work if they have a program to match your donation. Both current and retired employees may be eligible.



# Frequently Asked Questions

## **Q. What projects are planned for my contribution?**

Our parish has projected to work on various aspects of the Parish property. The largest portion of the project is dedicated to the rebuild of the Sanctuary to reflect Liturgical Norms. This investment is carefully planned to enrich the Parish both beautifully and spiritually for many generations to come. This includes new cedar wood Retablo, Altar, Presider and Auxiliary chairs, Ambo, Sanctuary Lamp and additional furniture for servers and cantor. The Sanctuary floor will be replaced with marble. The Communion Rail will be replaced and cushions will be added. Lighting for the Sanctuary will be upgraded. An ADA entrance will be created on the right side of the Altar so that handicap access will not have to go through the sanctuary. The Church, Rectory, Parish Office and Hall roofing will be replaced and climate control insulation will be added.

## **Q. When will the work begin?**

Projects will begin as soon as donations are received.

## **Q. What will happen if we go over our goal?**

All gifts collected after we exceed our goal will be put towards our wish list. This includes adapting the restrooms to be ADA Compliant and replacing the deteriorating pergola on Parish Hall, Office and Rectory. We also hope to be able to create a Marian shrine and All Saints shrine in the back of the church and update the vestibule.

## **Q. What if I never make pledges?**

Most people take advantage of time-payments for major purchases. A pledge to the St. Mary's by the Sea Legacy Project is a "time-payment plan" that makes it possible for you to meet your parish obligations without undue hardship. Pledges enable you to consider a more significant contribution to the campaign rather than a one-time gift.

## **Q. Is my pledge over and above my Sunday Offering?**

Yes. We can only reach our goal with a little extra sacrifice. We cannot reach our goal if we reduce our weekly offerings in order to make a pledge to the Legacy Project. St. Mary's by the Sea will continue to have normal operating expenses during the pledge period.

## **Q. Who will be asked to support the Campaign?**

Each member of our parish family will be asked to consider a significant gift for this major effort according to his or her financial ability. We will make a special appeal to parishioners who have been blessed by the Lord with exceptional earning ability or have been able to accumulate some assets. We hope each parish family member will play a conscientious role in restoring the heritage and renewing the future of St. Mary's by the Sea Church.



## **Q. What if I am currently unemployed?**

You cannot give what you do not have. You can still pledge and defer payment until your financial situation improves.

## **Q. What happens if I cannot fulfill my pledge?**

Pledges are made in good faith and accepted as such. If hardship or illness prevents you from fulfilling your pledge, let the parish know, and other arrangements will be made.

## **Q. How should I make my check payable?**

Please make your check payable to: **St. Mary's by the Sea Legacy Project**

## **DO I NEED TO MAKE A DOWN PAYMENT?**

We suggest a 10% down payment when the pledge is made, but this is not required. You may give less, give more, or make no down payment at all. The important step is to make the pledge.

# Legacy Project

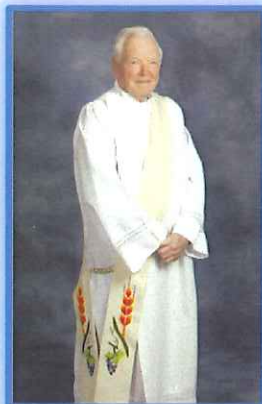
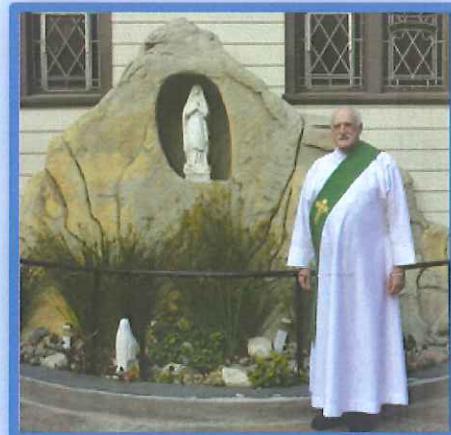
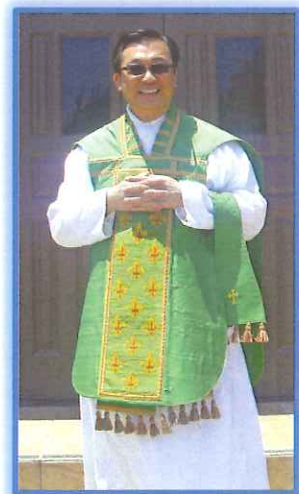
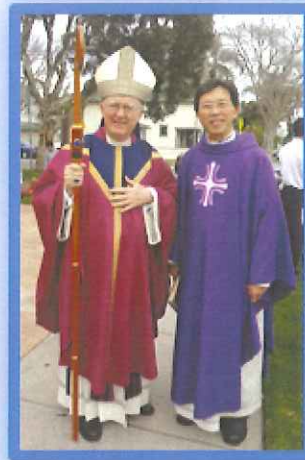


# Project Prayer

*Loving God, we come to You in thanksgiving, knowing that all we are and all we have is a gift from You. Gracious God, we understand that You call us to be the stewards of Your abundance, the caretakers of all You have entrusted to us. Holy God, in faith and love, help us to do Your will.*

*May our generosity build Your Kingdom in the parish, and beautify Your Legacy Church of Saint Mary's by the Sea for all people today and for our generation tomorrow. May our gifts be pleasing and acceptable to You. May we look to our future, united in faith, confident in hope, and sincere in our love under the mantle of Our Lady. We ask this through Jesus our Lord. Amen.*

*Saint Mary, pray for us.*







*St. Mary's by the Sea*  
*"Legacy Project"*  
Pledge Envelope

**ONLINE PLEDGING:** Please visit [www.stmarysbythesea.net](http://www.stmarysbythesea.net) and click on the **Donate Now** button and select **Legacy Project**. You must have or create a **profile**. Please contact the Parish Office for more information at (714) 536-6913.

**PLEDGE PAYMENTS WITH CHECKS:** Please make your checks payable to:  
**St. Mary's by the Sea Legacy Project.**

**Credit or Debit Card:**

Name: \_\_\_\_\_ ID# \_\_\_\_\_

Card Type/Bank: \_\_\_\_\_

Address: \_\_\_\_\_

Acct. #: \_\_\_\_\_

City/State/Zip: \_\_\_\_\_

Exp. Date: \_\_\_\_\_

Phone: \_\_\_\_\_

Please charge my card: Amount \$ \_\_\_\_\_

☐ One time

☐ Each month for \_\_\_\_\_ months

Email: \_\_\_\_\_

Signature: \_\_\_\_\_

/we would like to make a gift to the campaign:

Total Pledge: \$ \_\_\_\_\_

Down Payment: \$ \_\_\_\_\_

Balance Due: \$ \_\_\_\_\_

My/our gift will be paid over ☐ 1 ☐ 2 or ☐ 3 year

**Please send reminders:**

☐ Annually ☐ Semi-Annually

☐ Quarterly ☐ Monthly

## THREE YEAR GIFT TABLE:

Gift Level	Total Pledge	36 Monthly Payments	12 Quarterly Payments	6 Semi-Annual Payments	3 Annual Payments
Legacy	\$50,000	\$1,389	\$4,167	\$8,333	\$16,667
Heritage	\$25,000	\$694	\$2,083	\$4,167	\$8,333
Benefactor	\$10,000	\$278	\$833	\$1,667	\$3,333
Leadership	\$7,500	\$208	\$625	\$1,250	\$2,500
Cornerstone	\$5,000	\$139	\$417	\$833	\$1,667
Builder	\$2,500	\$69	\$208	\$417	\$833
Founder	\$1,500	\$42	\$125	\$250	\$500